



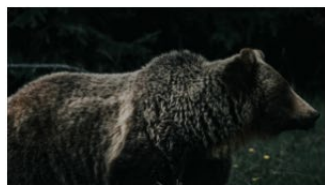
# EVPP 490/BIOL 417/GCH 494 EVPP 505/BIOL 507/GCH 594 *Planetary Health*

INSTRUCTOR  
AA AGUIRRE

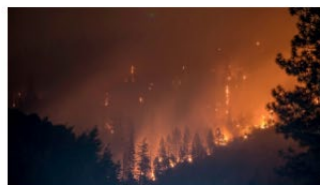
FALL 2021  
3 CREDITS

Thursdays  
4:30 – 7:10 PM  
1012 Horizon Hall

Planetary health is a field focused on characterizing the human-caused disruptions of Earth's natural systems to health. We will identify key challenges and propose solutions.



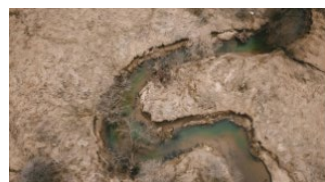
Biodiversity Shifts



Natural Disasters



Climate Change



Water Scarcity



Changing Food Systems



Urbanization

Very rapid human population growth combined with a rapid growth in per capita consumption are driving an extraordinary transformation of the Earth's natural systems including climate, oceans, land cover, biogeochemical cycles, biodiversity, and coastal and fresh water systems. These are the biophysical systems that underpin global food production, our exposure to infectious disease and natural hazards, even the habitability of the places where we live.

Register if you are interested in learning about:

- Environmental systems, biodiversity changes, ecosystem modifications, climate change, intensive farming, and emerging diseases
- Predicting future outcomes for human, animal and ecosystem health based on environmental trends
- Seeking solutions to many of these planetary problems



Department of Environmental  
Science and Policy

