



EVPP 490/505

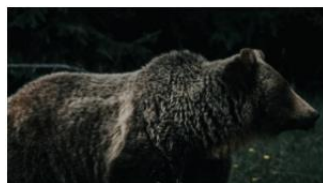
Planetary Health

INSTRUCTOR
AA AGUIRRE

FALL 2020
3 CREDITS

Planetary Hall 126
Friday 4:30-7:10 pm

Planetary health is a field focused on characterizing the human-caused disruptions of Earth's natural systems to health. We will identify key challenges and propose solutions.



Biodiversity Shifts



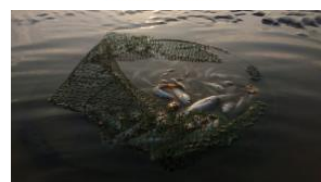
Natural Disasters



Climate Change



Water Scarcity



Changing Food Systems



Urbanization

Very rapid human population growth combined with a rapid growth in per capita consumption are driving an extraordinary transformation of the Earth's natural systems including climate, oceans, land cover, biogeochemical cycles, biodiversity, and coastal and fresh water systems. These are the biophysical systems that underpin global food production, our exposure to infectious disease and natural hazards, even the habitability of the places where we live.

Register if you are interested in learning about:

- Environmental systems, biodiversity changes, ecosystem modifications, climate change, intensive farming, and emerging diseases
- Predicting future outcomes for human, animal and ecosystem health based on environmental trends
- Seeking solutions to many of these planetary problems



Department of Environmental
Science and Policy

