

MARK D. UHEN, CURRICULUM VITAE

CONTACT INFORMATION

Department of Atmospheric, Oceanic, and Earth Sciences
George Mason University Office: 703-993-5264
MS 6E2 Fax: 703-993-3535
Fairfax, VA 22030 E-mail: muhen@gmu.edu
Web: <http://uhenlab.weebly.com/> Twitter: <https://twitter.com/UhenLab>
Facebook: <https://www.facebook.com/uhenlab?fref=nf>

EDUCATION

1996 PhD Geology, University of Michigan, Ann Arbor, Michigan, 48109, Philip D. Gingerich, advisor
1993 MS Geology, University of Michigan, Ann Arbor, Michigan, 48109, Philip D. Gingerich, advisor
1990 BS Geology major, Biology minor, University of Wisconsin-Oshkosh, Wisconsin, 54901

CURRENT AND PAST POSITIONS

Associate Chair, George Mason University, Department of Atmospheric, Oceanic, and Earth Sciences, 2017-present
Associate Professor, George Mason University, 2016-present
Assistant Professor, George Mason University, 2011-2016
Term Assistant Professor, George Mason University, 2009-2011
Curator of Paleontology, Alabama Museum of Natural History, 2008-2009
Senior Postdoctoral Fellow, Department of Paleobiology, US National Museum, Smithsonian, 2007-2008
Head of Research and Collections, Cranbrook Institute of Science, 2002-2006
Curator of Paleontology and Zoology, Cranbrook Institute of Science, 1996-2006

ADDITIONAL AFFILIATIONS

Affiliate Faculty, George Mason University, Environmental Science and Policy, 2010-present
Research Associate, Natural History Museum of Los Angeles County, 2007-present
Research Associate, US National Museum, Smithsonian Institution, 1999-present
Adjunct Curator, Cranbrook Institute of Science, 2006-2009
Adjunct Research Scientist, University of Michigan Museum of Paleontology, 1996-2006

AWARDS AND GRANTS

Current Grant Support Total: \$889,235
Career Grant Support Total: \$3,503,986
Home Institutional Support Total: \$1,486,126

AWARDS AND GRANTS (continued)

- 2020 National Science Foundation Award Number EAR 1948831
Project Award: \$666,472
Dates: June 1, 2020 to May 31, 2023
Title: Collaborative Research: Geoinformatics: Facility: Paleobiology Database:
Preserving and Presenting Ancient Data for Future Research
Shanan Peters, PI, University of Wisconsin-Madison
Mark D. Uhen, lead PI, George Mason University, \$666,472
- 2017 Research Data Alliance USA
Project Award: \$35,000
Dates: March 1, 2018 to August 30, 2018
Title: Paleobiology Database Adoption of RDA Scalable Dynamic Data Citation
Methodology
Mark D. Uhen, PI, George Mason University, Fairfax VA
- 2017 National Science Foundation Award Number ICER 714551 (supplement)
Project Award: \$20,064
Dates: June 15, 2015 to May 31, 2017 (extended to May 31, 2018)
Title: Collaborative Research: Leveraging "Big Data" to Explore Big Ideas: Utilizing the
Paleobiology Database to Provide Hands-on Research Opportunities for
Undergraduates
Christian George, co-PI, High Point University, High Point, NC
Laura Lukes, co-PI, George Mason University, Fairfax, VA
Rowan Lockwood, PI, William & Mary, Williamsburg, VA
Mark D. Uhen, PI, George Mason University, Fairfax VA, \$20,064
- 2015 National Science Foundation Award Number ICER 1540997
Project Award: \$897,713
Dates: September 1, 2015 to August 31, 2017 (extended to August 31, 2018)
Title: EarthCube IA: Collaborative Proposal: Building Interoperable
Cyberinfrastructure (CI) at the Interface between Paleogeoinformatics and
Bioinformatics
Brian Bills, PI, Pennsylvania State University
Jessica Blois, PI, University of California, Merced
Edward Davis, PI, University of Oregon
Simon Goring, PI, University of Wisconsin-Madison
Russell Graham, PI, Pennsylvania State University
Shanan Peters, PI, University of Wisconsin-Madison
Alison Smith, PI, Kent State University
Mark D. Uhen, lead PI, George Mason University, \$252,843
Jack Williams, PI, University of Wisconsin-Madison

AWARDS AND GRANTS (continued)

- 2015 National Science Foundation Award Number ICER 1540929
Project Award: \$800,000
Dates: November 1, 2015 to October 31, 2017 (extended to August 31, 2018)
Title: EarthCube IA: Collaborative Proposal: ePANDDA: Enhancing Paleontological and Neontological Data Discovery API
Susan H. Butts, PI, Yale Peabody Museum, New Haven, CT
Talia S. Karim, PI, Colorado Museum of Natural History, University of Colorado, Boulder, CO
Neil H. Landman, PI, American Museum of Natural History, New York, NY
Gil Nelson, PI, Florida State University, Tallahassee FL
Christopher A. Norris, PI, Yale Peabody Museum, New Haven, CT
Jocelyn A. Sessa, PI, American Museum of Natural History, New York, NY
Dena Smith, lead PI, Sedimentary Geology, Time, Paleontology, Paleoclimatology, Energy, Geological Society of America, Boulder, CO
Mark D. Uhen, PI, George Mason University, Fairfax, VA \$115,394
- 2015 National Science Foundation Award Number ICER 714551
Project Award: \$249,966
Dates: June 15, 2015 to May 31, 2017 (extended to May 31, 2018)
Title: Collaborative Research: Leveraging "Big Data" to Explore Big Ideas: Utilizing the Paleobiology Database to Provide Hands-on Research Opportunities for Undergraduates
Christian George, co-PI, High Point University, High Point, NC
Laura Lukes, co-PI, George Mason University, Fairfax, VA
Rowan Lockwood, PI, William & Mary, Williamsburg, VA
Mark D. Uhen, PI, George Mason University, Fairfax VA, \$202,699
- 2015 George Mason University, Office of Students as Scholars (OSCAR), Earth Science Curriculum Improvement Grant
Project Award: \$14,000
Dates: June 1, 2015 to December 31, 2017
Title: Earth Science Curriculum Improvement
Christian George, George Mason University, Fairfax, VA
Julia Nord, George Mason University, Fairfax, VA
Mark D. Uhen, George Mason University, Fairfax, VA

AWARDS AND GRANTS (continued)

- 2013 National Science Foundation, EarthCube Research Coordination Network Grant, Award Number ICER 1340301
Project Award: \$299,880
Dates: September 15, 2013 to August 31, 2016 (extended to August 31, 2017)
Title: EarthCube RCN: C4P: Collaboration and Cyberinfrastructure for Paleogeosciences
Kerstin Lehnert, PI, Columbia University, New York, NY
Christopher Jenkins, co-PI, Institute of Arctic and Alpine Research, University of Colorado at Boulder, Boulder, CO
Mark D. Uhen, co-PI, George Mason University, Fairfax, VA
Jack Williams, co-PI, University of Wisconsin-Madison
- 2012 George Mason University, Summer Research Funding Grant
Project Award: \$4,193
Dates: June 15, 2013 to June 16, 2014
Title: Eocene cetaceans of Peru
Mark D. Uhen, George Mason University, Fairfax, VA
- 2010 George Mason University, College of Science Curricular Innovation Grant
Project Award: \$1,500
Dates: September 1, 2010 to June 1, 2011
Title: Vertebrate Paleontology, GEOL 334/BIOL 334
Mark D. Uhen, George Mason University, Fairfax, VA
- 2006 US National Museum, Smithsonian, Department of Paleobiology, Kellogg Fund
Project Award: \$97,000
Dates: January 15, 2007 to June 1, 2008
Title: Senior Postdoctoral Fellowship
Mark D. Uhen, Cranbrook Institute of Science, Bloomfield Hills, MI
- 2004 US National Museum, Smithsonian, Department of Paleobiology, Kellogg Fund
Project Award: (\$5,471)
Dates: July, 2004
Title: Odontocete Collection Inventory/Improvement
Mark D. Uhen, Cranbrook Institute of Science, Bloomfield Hills, MI
- 2004 US National Museum, Smithsonian, Department of Paleobiology, Kellogg Fund
Project Award: \$4,611
Dates: November, 2004
Title: Evidence of Echolocatory Ability in Cetacean Skulls
Mark D. Uhen, Cranbrook Institute of Science, Bloomfield Hills, MI

AWARDS AND GRANTS (continued)

- 2004 National Science Foundation, Award Number 0353589
Project Award: \$232,513
Dates: April 1, 2004 to March 31, 2008
Title: Paleoenvironmental characterization of a dinosaur site in the Morrison Formation of the Bighorn Basin, Wyoming
B. Bodenbender, PI, Hope College, Holland, MI
Timothy Demko, PI, University of Minnesota, Duluth, Duluth, MN
Mark D. Uhen, Research Collaborator, Cranbrook Institute of Science, Bloomfield Hills, MI
- 2001 National Geographic Society, Committee for Research and Exploration, Award Number 6985-01
Project Award: \$23,535
Dates: January 1, 2002 to December 31, 2002
Title: Early Oligocene cetaceans of Southeastern Alaska
W. C. Clyde, PI, University of New Hampshire, Durham, NH
Mark D. Uhen, PI, Cranbrook Institute of Science, Bloomfield Hills, MI
- 2001 National Science Foundation, Grant No. EAR 0087698
Project Award: \$114,142
Dates: March 15, 2001 to February 29, 2004
Title: Computed Tomography of Endocranial Morphology in Fossil Cetacea
L. Marino, PI, Emory University, Atlanta, GA
Mark D. Uhen, co-PI, Cranbrook Institute of Science, Bloomfield Hills, MI \$18,018
- 2000 US National Museum, Smithsonian, Department of Paleobiology, Kellogg Fund
Project Award: \$1,178
Dates: July 2000
Title: Archaeocete Collection Inventory/ Improvement
Mark D. Uhen, Cranbrook Institute of Science, Bloomfield Hills, MI
- 1999 National Geographic Society, Award Number 6417-99
Project Award: \$36,748
Dates: January 1, 1999 to December 31, 1999
Title: Fossil Mammals from the Cretaceous and Tertiary of Mali
Maureen A. O'Leary, PI, State University of New York, Stony Brook, Stony Brook, NY
Mark D. Uhen, PI, Cranbrook Institute of Science, Bloomfield Hills, MI
- 1996 Horace H. Rackham School of Graduate Studies, University of Michigan, Discretionary Funds
Title: New protocetid from Natchitoches Parish, Louisiana
Mark D. Uhen, University of Michigan, Ann Arbor, MI

AWARDS AND GRANTS (continued)

- 1995 Ermine Cowles Case Student Award for Outstanding Scholarship and Attainment in Research
Mark D. Uhen, University of Michigan, Ann Arbor, MI
- 1994 Society of Vertebrate Paleontology Graduate Fellowship
Mark D. Uhen, University of Michigan, Ann Arbor, MI
- 1994 Research Partnership (with P. D. Gingerich). Horace H. Rackham School of Graduate Studies, University of Michigan
Mark D. Uhen, University of Michigan, Ann Arbor, MI
- 1994 Smithsonian Predoctoral Fellowship, Department of Vertebrate Zoology, US National Museum of Natural History, Smithsonian Institution
Mark D. Uhen, University of Michigan, Ann Arbor, MI
- 1993 Scott Turner Awards in Earth Science, Department of Geological Sciences, University of Michigan
Mark D. Uhen, University of Michigan, Ann Arbor, MI

TEACHING EXPERIENCE

- 2009-present Evolution and Extinction, Introductory Geology, Historical Geology, Environmental Geology, Vertebrate Paleontology, George Mason University
- 2008 Flippers & Flukes, University of Alabama Honors College
- 2004-2006 Red Canyon Ranch NSF Research Experience for Undergraduates: Paleoenvironmental characterization of a dinosaur site in the Morrison Formation of the Bighorn Basin, Wyoming
- 2000 Historical Geology, University of Michigan-Dearborn
- 1995 Fossils, Primates, and Human Evolution, University of Michigan
- 1995 The Fossil Record & Evolution of Mammals lab, University of Michigan
- 1994 The Fossil Record & Evolution of Primates lab, University of Michigan
- 1993 Invertebrate Paleontology lab, University of Michigan
- 1992 Evolution and Extinction recitation, University of Michigan

FIELD EXPERIENCE

- 2012 Oligocene of the Republic of Georgia
- 2011 Late Eocene of Western Sahara
- 2008 Middle and late Eocene vertebrates of the Pisco Basin, Peru
- 2008 Middle Eocene of Alabama and Mississippi
- 2006 Middle and late Eocene cetaceans of the Pisco Basin, Peru
- 2005 Middle Eocene cetaceans of Alabama
- 2004-2006 Middle Jurassic Morrison Formation dinosaurs of the Bighorn Basin, Wyoming
- 2003 Oligocene and Miocene marine mammals of coastal Oregon
- 2002 Oligocene whales of Southeast Alaska
- 1998 Late and Middle Eocene archaeocete whales of Alabama, Mississippi, and South Carolina
- 1996 Middle and late Eocene archaeocete whales of Louisiana
- 1997 Miocene whales in northern Virginia, Virginia Museum of Natural History
- 1991-1993 Pleistocene mastodons of Michigan with Dr. Daniel C. Fisher, University of Michigan Museum of Paleontology
- 1991-1992 Paleogene vertebrates of the Bighorn Basin, Wyoming with Dr. Philip D. Gingerich
- 1991 Taphonomy field course with Dr. Susan Kidwell and Dr. Michael LaBarbera at Friday Harbor Marine Laboratory, University of Washington

PROFESSIONAL AND ACADEMIC SOCIETIES

- [Geological Society of America](#)
- [Paleontological Society](#)
- [Society for Marine Mammalogy](#)
- [Society of Vertebrate Paleontology](#)

SYNERGISTIC ACTIVITIES

Post-Doctoral Fellow Advising

Leonard DeWaele, George Mason University, Department of Atmospheric, Oceanic and Earth Science. Project: A multi-purpose morphometric analysis of extant seal (Mammalia, Phocidae) limb bones and their implications for seal evolution. 2018-2019.

Graduate Student Advising

Alex Levy, George Mason University, Department of Atmospheric, Oceanic and Earth Science, Master of Science committee member and chair. Project: Functional morphology of archaeocete hind limbs. 2020-present.

Nicholas Brand, George Mason University, Department of Environmental Science and Policy PhD committee member and chair. Project: Early mysticete evolution. 2020-present.

Alan Munro, George Mason University, Department of Atmospheric, Oceanic and Earth Science, Master of Science committee member and chair. Project: Hymenoptera of the Kishenehn Formation. 2020-present.

Margot Nelson, George Mason University, Department of Atmospheric, Oceanic and Earth Science, Master of Science committee member and chair. Project: A new platanistoid *Perditicetus yaconensis* gen. et sp. nov. (Cetacea, Odontoceti) from the Chattian–Aquitanian Nye Formation of Oregon. 2014-2019. Department of Environmental Science and Policy PhD committee member and chair. Project: Evolution of the Squalodontidae. 2019-present.

Abigail Glass, George Mason University, Department of Atmospheric, Oceanic and Earth Science, Master of Science committee member and chair. Project: Examination of early odontocete periotics. 2019-present.

Carlos Mauricio Peredo, George Mason University, Department of Environmental Science and Policy, Master of Science committee member and chair. Project: Biogeography of fossil marine mammals. 2014-2019. PhD committee member and chair. Project: Evolution of early Mysticeti feeding ecology. 2015-2019.

Advait Jukar, George Mason University, Department of Environmental Science and Policy, PhD committee member and chair. Project: Tempo and Mode of Functional Turnover in Mammalian Communities in Response to Climate Induced Vegetative Change. 2014-2018.

Joseph Villari, George Mason University, Department of Environmental Science and Policy, Master of Science committee member and chair. Project: Morphometrics of modern delphinid skulls. 2014-2016.

Loren Petruny, George Mason University, Department of Environmental Science and Policy, Master of Science committee member and chair. Project: Turonian foraminiferal isotope paleobiology and bio- and chemostratigraphic correlation of Cretaceous Tanzania Drilling Program boreholes. 2013-2015.

Additional Graduate Committees

Munir ul-Haq, University of Balochistan, Quetta, Center of Excellence in Mineralogy, PhD committee member. Project: Paleontology, biology and paleoecology of *Rodhocetus* from the early Middle Eocene of Pakistan. 2013.

Jonathan Geisler, Columbia University, Department of Earth and Environmental Sciences, PhD committee member. Project: Morphological and molecular evidence for the phylogeny of Cetacea and Artiodactyla: Explaining incongruence between types of data. 2001

George Mason University Service

College of Science Promotion and Tenure Level II committee, 2018-present

Office of Student Scholarship, Creative Activities, & Research search committee for the new Assistant Director of OSCAR, 2015

George Mason University Service (continued)

Department of Atmospheric, Oceanic, and Earth Sciences Geology Term Faculty Search Committee, Chair, 2015
George Mason Graduate Council, College of Science faculty representative, 2014-2017
George Mason Faculty Senate General Education Committee, College of Science faculty representative, 2011-2014
Sigma Gamma Epsilon, Epsilon Omicron chapter (geology honor fraternity) advisor, 2011-2014
Mason Geology Club advisor, 2010-2014
Department of Atmospheric, Oceanic, and Earth Sciences Geology Term Faculty Search Committee, member, 2012-2013
Department of Atmospheric, Oceanic, and Earth Sciences ITU Departmental Risk Assessment Coordinator, 2010-2013
Department of Atmospheric, Oceanic, and Earth Sciences Vision Committee, member, 2011-2013
Department of Atmospheric, Oceanic, and Earth Sciences Structural Geology Search Committee, member, 2011-2012
Mason General Education working group, member, 2010-2011
AOES Geology position development committee, member, 2012
ESP Executive Committee, Department of Atmospheric, Oceanic, and Earth Sciences, Geology Program representative, 2011-present
Mason LGBT Faculty/Staff Alliance leader, 2011-2018

George Mason University Exhibit Development

Over the course of the past 5 years I have developed three paleontology exhibits in Exploratory Hall on the Mason campus. The first includes fossils and casts of fossils from throughout all of earth history, and includes brief exhibit text on several topics including the geologic time scale, teeth, and natural selection. The second includes casts of skulls that illustrate the evolution of humans from non-human primates. The third is a cast skeleton of *Zygorhiza kochii*, an archaeocete whale from Eocene deposits of Mississippi that will hang in the Lab Annex atrium. These exhibits are used in several geology classes (GEOL 102, 134, 312, and 334), and in addition, highlight the courses and paleontology research being done on campus to potential Mason students that are all brought through Exploratory Hall on campus tours. These have proved to be an effective recruiting tool for the program, department, college, and university.

Undergraduate Research Supervisor

Michael Hudgins, Triassic crocodylomorphs in North America, 2017-2018.
Franco Villegas-Garin, Environmental segregation of small theropods and Mesozoic avians, 2016-2018.
Brenlee Shipps, Fossil mysticete depositional environments, 2016-2017.
Matthew Eberle, Fossil cetacean preparation, 2013-2015.
Ricardo McCleese, Fossil sirenian ecology, 2012-2013.
Heather Scheer, Vertebrate fossil preparation, 2009-2010.
Shawn Yount, Biogeography of Neogene dwarf elephants, 2009-2010.

Professional Service

Proposal Referee

US National Science Foundation, National Geographic Society

Journal or Book Editor

[Elements of Paleontology](#), Editorial Board, 2018-present

[Foundations of Macroecology](#) University of Chicago Press, Sub-Editor, 2014

[Acta Palaeontologia Polonica](#) Editor, 2014-2017.

[Paleobiology](#) Associate Editor, 2009-2017

[Evolution of Tertiary Mammals of North America, Volume 2](#), Cambridge University Press
(Editor with C. Janis and G. F. Gunnell), 2008

Journal Referee

Acta Palaeontologica Polonica

Anatomical Record

*Annual Reviews of Earth and Planetary
Sciences*

Antarctic Science

Biology Letters

Comptes rendus Palevol

*Contributions from the Museum of
Paleontology, University of Michigan*

Current Biology

Earth-Science Reviews

Ecology

Evolution

Geobios

Geology

Journal of Anatomy

Journal of Mammalian Evolution

Journal of Paleontology

*Journal of South American Earth
Sciences*

Journal of Systematic Palaeontology

Journal of Vertebrate Paleontology

*Marine & Freshwater Behaviour &
Physiology*

Marine Mammal Science

Paleobiology

PLoS One

*Proceedings of the Royal Society B
Nature*

Nature Communications

Naturwissenschaften

*Palaeogeography, Palaeoclimatology,
Palaeoecology*

Palaeontologica Electronica

Palaeontology

PeerJ

*Quarterly Review of Biology
Science*

*Zoological Journal of the Linnaean
Society*

Professional Society Committees

[Society of Vertebrate Paleontology](#), Program Committee co-Chair, 2020-present

[Society of Vertebrate Paleontology](#), Diversity Committee, 2017-present

[Paleontological Society](#), Paleontological Society Medal Award committee, 2017-present

[Society of Vertebrate Paleontology](#), Romer Prize Committee, 2012-present (chair, 2015-present)

[Paleontological Society](#), Strimple Award committee, 2013-2017

[Society of Vertebrate Paleontology](#), Lanzendorf PaleoArt Prize Committee, 2008-2012

[Society of Vertebrate Paleontology](#) Predoctoral Scholarship Grant Committee member, 2007-2010

Professional Society Committees (continued)

[Geological Society of America](#), North-Central Section, Roy J. Shlemon Mentors in Applied Geology, 2006
[Society of Vertebrate Paleontology](#) Patterson Award Committee, 2006-2009
[Society of Vertebrate Paleontology](#), Information Management Committee, 2005-present
[Society of Vertebrate Paleontology](#) Patterson Award Committee Chair, 2004-2006
[Society for Marine Mammalogy](#), Scientific Program Committee, 2004-present

Conference or Symposium Organizer

Collaboration and Cyberinfrastructure for Paleogeosciences (C4P) Paleobiology Workshop, Washington, D. C., 2014.
[Seventh Triannual Secondary Adaptations of Tetrapods to Life in the Water](#), conference organizer, George Mason University, Fairfax, VA, 2014
Start of the Radiation of Neoceti, [Society of Vertebrate Paleontology](#) symposium co-convener, Society of Vertebrate Paleontology, Ottawa, ON, Canada, 2006
Evolution of Aquatic Tetrapods, conference organizer, Northeast Ohio Universities College of Medicine, Rootstown, OH, 2005

Additional Professional Service

[EarthRates steering committee](#), 2018-present.
[Paleobiology Database](#) Executive Committee Chair, 2013-present.
[Paleobiology Database](#) Executive Committee member, 2011-present.
[Building a National Community of Natural History Collections](#), NSF-funded Research Coordination Network member, 2007-2010

Additional Professional Service (continued)

[Integrating Macroecological Patterns and Processes across Scales](#), NSF-funded Research Coordination Network member, 2006-2012
[Paleobiology Database, Advisory Board member](#), 2003-2011
[Paleobiology Database, Vertebrate Working Group](#), 2000-present
Associate Web Editor, [Society of Vertebrate Paleontology](#), 1999-2003
Scientific Advisor to [University of Michigan Exhibit Museum](#) for *Back to the Sea: The Evolution of Whales*, 1995-1996
[Society of Vertebrate Paleontology](#), Membership Committee Co-chair, 1997-1999
Journal Club organizer, [University of Michigan Museum of Paleontology](#), 1993-1994

Additional Outreach Activities and Workshops

PBS/Smithsonian Channel Lineage project advisor, 2018-2019.
EarthCube All-Hands Meeting, Seattle, WA, 2017.
Collaboration and Cyberinfrastructure for Paleogeosciences (C4P) Hackathon, Boulder, CO, 2016.
EarthCube All-Hands Meeting, Denver, CO, 2016.
Using the Neotoma database in the classroom workshop, December, 2015.
Small Collections Network webinar, October, 2015.
EarthCube All-Hands Meeting, Washington, DC, 2015.

Additional Outreach Activities and Workshops (continued)

- AAAS Arnold Workshop on Reproducibility in the Field Sciences, Washington, DC, 2014.
- EarthCube All-Hands Meeting, Washington, DC, 2014.
- Cyberinfrastructure for Paleogeosciences webinar, April, 2014.
- PBS, NOVA episode, [Inside Animal Minds](#), 2013.
- iDigBio Georeferencing Train the Trainers 2 Workshop, August, 2013.
- Collectionsweb Stakeholders Workshop, Washington, DC, March, 2013.
- SENCER (Science Education for New Civic Engagements and Responsibilities) Summer Institute, Santa Clara, CA, August, 2012.

Additional Outreach Activities and Workshops (continued)

- Innovations in Teaching & Learning conference, workshop leader, George Mason University, Fairfax, VA, October, 2011
- National Public Radio, *All Things Considered*, [Legs Propelled Whale Ancestor](#), 2008.
- BBC/Discovery Channel advisor, [Walking with Beasts](#), 2001; *Chased by Dinosaurs*, 2004.

INVITED LECTURES

- 2016 Geological Society of Washington, Washington, D.C.
- 2015 Paleontological Research Institution, Ithaca, New York
- 2015 US Museum of Natural History (Smithsonian Institution), Department of Paleobiology, Washington, DC
- 2015 Macon Museum of Arts and Sciences, Macon, Georgia
- 2014 University of New Mexico, Department of Biology, Albuquerque, NM
- 2012 Yale University Department of Geology and Geophysics, New Haven, CT
- 2010 Society for Experimental Biology, Salzburg, Austria.
- 2010 University of Wyoming, Department of Geology and Geophysics, Laramie, WY
- 2010 University of California Santa Cruz, Department of Ecology and Evolutionary Biology, Santa Cruz, CA
- 2009 University of Alabama, Department of Geological Sciences, Tuscaloosa, AL
- 2009 University of Alabama, Blount Convocation, Tuscaloosa, AL
- 2008 Marine Mammal Conference, University of Wisconsin-Madison School of Veterinary Medicine, Madison, WI
- 2008 Gem, Lapidary, and Mineral Society of Montgomery County, Gaithersburg, MD
- 2008 Birmingham Paleontological Society, Birmingham, AL
- 2008 Alabama Paleontological Society, Birmingham, AL
- 2007 United States National Museum of Natural History Naturalist Center, Leesburg, VA
- 2007 North Carolina Museum of Natural Sciences, Raleigh, NC
- 2006 Adult Learning Institute, Oakland Community College, Southfield, MI
- 2006 University of Washington, Burke Museum of Natural History and Culture, Seattle WA
- 2006 University of Washington, Department of Biology, Seattle WA
- 2005 Milwaukee Public Museum, Milwaukee, WI
- 2002 Michigan Basin Geological Society, Lansing, MI
- 2002 Sigma Xi, General Motors R&D Center, Warren, MI
- 2001 University of California Santa Cruz, Department of Earth & Planetary Sciences, Santa Cruz, CA

INVITED LECTURES (continued)

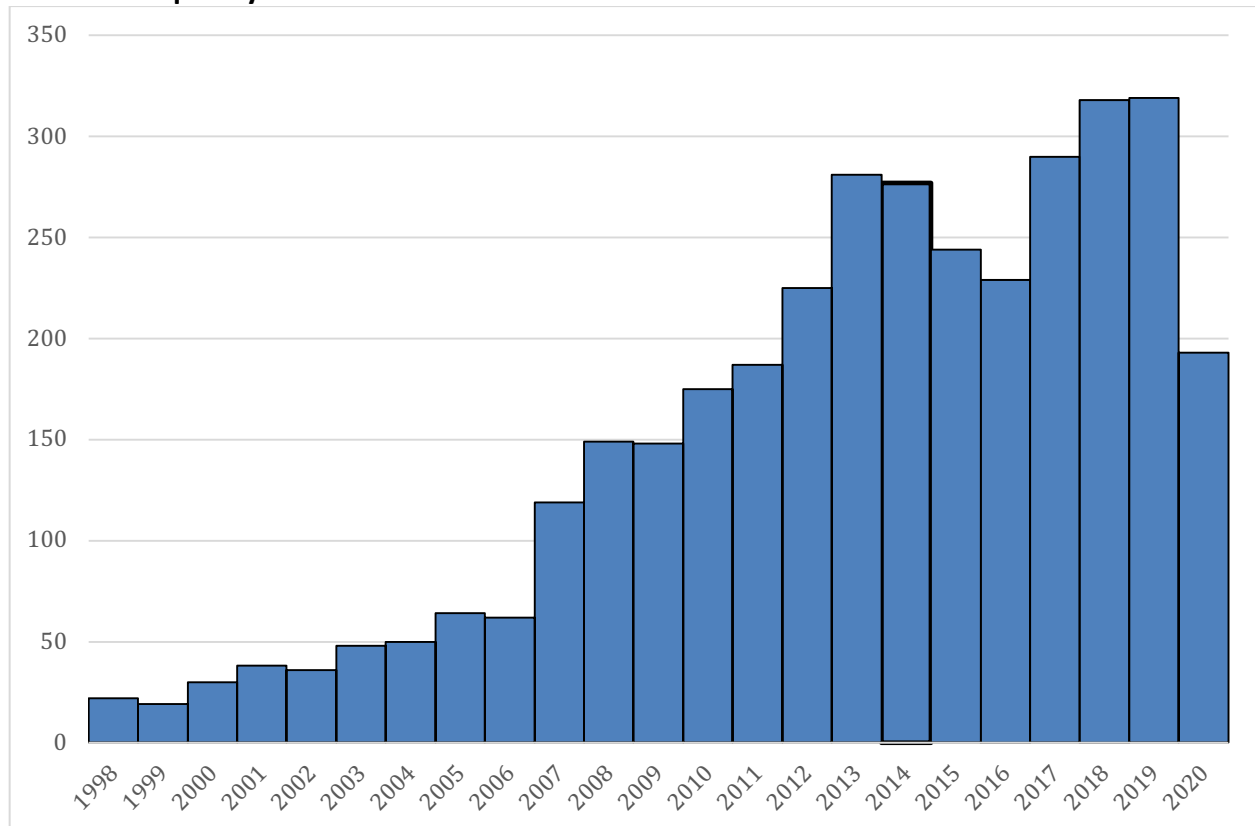
- 2001 United States National Museum of Natural History, Washington, DC
- 2001 Oakland University, Biology Department, Detroit, MI
- 2001 Calvert Marine Museum, Solomons, MD
- 2001 Ages Before Ages: The Earliest Worlds, The Altamont School, Birmingham, AL
- 2001 Paleontological Society of Washington, Washington, DC
- 1998 Midwest Mineralogical and Lapidary Society, Dearborn, MI
- 1996 Michigan State University, Department of Geology and Geophysics, East Lansing, MI
- 1996 Hope College, Department of Geological and Environmental Sciences, Holland, MI

PUBLICATIONS SUMMARY

Citation Indexes

Source	# of works	# of citations	h index	i10 index
Google Scholar	131	3590	32	56
Web of Science	78	1703	21	38

Citation Frequency



PEER REVIEWED PUBLICATIONS

- 86. in press Uhen, M. D. and Taylor, D. A basilosaurid archaeocete (Cetacea, Pelagiceti) from the Late Eocene of Oregon, USA. *PeerJ*.

85. 2020 Nelson, M. D., and **Uhen, M. D.**, A new platanistoid *Perditicetus yaconensis* gen. et sp. nov. (Cetacea, Odontoceti) from the Chattian–Aquitania Nye Formation of Oregon: *Journal of Systematic Palaeontology*.
84. 2020 Close, R. A., Benson, R. B. J., Alroy, J., Carrano, M. T., Cleary, T. J., Dunne, E. M., Mannion, P. D., **Uhen, M. D.**, and Butler, R. J., The apparent exponential radiation of Phanerozoic land vertebrates is an artefact of spatial sampling biases: *Proceedings of the Royal Society B*, 287(1924): 20200372.
83. 2020 Hudgins, M. N., **Uhen, M. D.**, and Hinnov, L. A., The evolution of respiratory systems in Theropoda and Paracrocodylomorpha, the end-Triassic extinction, and the role of Late Triassic atmospheric O₂ and CO₂: *Palaeogeography, Palaeoclimatology, Palaeoecology*, 545.
82. 2019 Churchill, M., and **Uhen, M. D.** Taxonomic implications of morphometric analysis of earless seal limb bones: *Acta Palaeontologica Polonica*, 64(2): 213–230.
81. 2019 Lukes, L. A., Ryker, K., Millsaps, C., Lockwood, R., **Uhen, M. D.**, George, C. O., Bentley, C., and Berquist, P. J. Leveraging a Large Database to Increase Access to Undergraduate Research Experiences: *Scholarship and Practice of Undergraduate Research*, 2(4): 4-13.
80. 2019 Close, R. A., Benson, R. B. J., Alroy, J., Behrensmeyer, A. K., Benito, J., Carrano, M. T., Cleary, T. J., Dunne, E. M., Mannion, P. D., **Uhen, M. D.** Butler, R. J. Diversity dynamics of Phanerozoic terrestrial tetrapods at the local-community scale. *Nature Ecology and Evolution* 3: 590-597.
79. 2018 Peredo, C. M., Pyenson, N. D., Marshall, C. D., **Uhen, M. D.** Tooth loss precedes the origin of baleen in whales. *Current Biology* 28: 1-9.
78. 2018 Lockwood, R. Cohen, P. A., **Uhen, M. D.**, Ryker, K. Utilizing the Paleobiology Database to provide education opportunities for undergraduates. *Elements of Paleontology*: 1-22.
77. 2018 **Uhen, M. D.**, Goring, S., Jenkins, J., Williams, J. W. EarthLife Consortium: Supporting digital paleobiology. *PAGES* 26(2): 78-79.
76. 2018 Jukar, A. M., Lyons, S. K. **Uhen, M. D.** A cranial correlate of body mass in proboscideans. *Biological Journal of the Linnean Society*.
75. 2018 Gilbert, K., **Uhen, M. D.**, and Ivany, L. C. Living fast and dying young: Life history and ecology of a Neogene sperm whale. *Journal of Paleontology* 38(2): e1439038.

PEER REVIEWED PUBLICATIONS (continued)

74. 2018 Nelson, M. D. and **Uhen, M. D.** First occurrence of a squalodelphinid (Cetacea, Odontoceti) from the Early Miocene of Washington State. *Journal of Vertebrate Paleontology* 38(2): e1428197.
73. 2018 Peredo, C. P., **Uhen, M. D.**, and Nelson, M. D. A new kentriodontid (Cetacea: Odontoceti) from the early Miocene Astoria Formation of Washington State, USA. *Journal of Vertebrate Paleontology* 38(2): e1411357.
72. 2018 Thewissen, J. G. M. and **Uhen, M. D.** Evolutionary patterns. pp. 344 in *Encyclopedia of Marine Mammals*, 3rd edition, W. F. Perrin, J. G. M. Thewissen, and K. M. Kovacs, ed. Academic Press, London.
71. 2018 **Uhen, M. D.** Basilosaurids and kekenodontids. pp. 79 – 80 in *Encyclopedia of Marine Mammals*, 3rd edition, W. F. Perrin, J. G. M. Thewissen, and K. M. Kovacs, ed. Academic Press, London.
70. 2018 **Uhen, M. D.** Dental Morphology. pp. 246 – 250 in *Encyclopedia of Marine Mammals*, 3rd edition, W. F. Perrin, J. G. M. Thewissen, and K. M. Kovacs, ed. Academic Press, London.
69. 2017 Pimiento, C., Griffin, J. N., Clements, C. F., Silvestro, D., Varela, S., **Uhen, M. D.**, and Jaramillo, C. The Pliocene marine megafauna extinction and its impact on functional diversity. *Nature Ecology & Evolution* 1:1100-1106.
68. 2017 Peredo, C. M., and **Uhen, M. D.** Alveoli, teeth, and tooth loss: Understanding the homology of internal mandibular structures in mysticete cetacean. *PLoS One*. 12(5): e0178243.
67. 2017 Pauli, J. N., Newsome, S. D., Cook, J. A., Harrod, C., Steffan, S. A., Baker, C. J., Ben-David, M., Bloom, D., Bowen, G. J., Cerling, T. E., Cicero, C., Cook, C., Dohm, M., Dharampal, P. S., Graves, G., Gropp, R., Hobson, K. A., Jordan, C., MacFadden, B., Pilaar Birch, S., Poelen, J., Ratnasingham, S., Russell, L., Stricker, C. A., **Uhen, M. D.**, Yarnes, C. T., Hayden, B. Opinion: Why we need a centralized repository for isotopic data. *Proceedings of the National Academy of Sciences of the United States of America* 114(12): 2997-3001.
66. 2016 Peredo, C. M., Pyenson, N. D., and **Uhen, M. D.** Morphological consequences of tooth loss: A comparison of the course of the mandibular canal in mysticete cetaceans using 3D models. *Anatomical Record* 299(Special Feature):195-196.
65. 2016 Peredo, C. M., and **Uhen, M.D.** A new basal chaeomysticete (Mammalia: Cetacea) from the Late Oligocene Pysht Formation of Washington, USA. *Papers in Palaeontology*, 2(4): 533-554.

64. 2016 Marx, F., Lambert, O., Uhen, M. D. *Cetacean Palaeobiology*, John Wiley & Sons.
63. 2016 Peredo, C. M., **Uhen, M. D.**, Exploration of marine mammal paleogeography in the Northern Hemisphere over the Cenozoic using beta diversity. *Palaeogeography, Palaeoclimatology, Palaeoecology*, 449:227-235.
62. 2016 Godfrey, S. J., **Uhen, M. D.**, and Osborne, J. E., A new specimen of *Agorophius pygmaeus* (Agorophiidae, Odontoceti, Cetacea) from the early Oligocene Ashley Formation of South Carolina, U.S.A. *Journal of Paleontology*.
61. 2015 Varela, S., González-Hernández, J., Sgarbi, L.F., Marshall, C., **Uhen, M. D.**, Peters, S. & McClennen, M. paleobioDB: an R package for downloading, visualizing and processing data from the Paleobiology Database. *Ecography*, 38: 1-7.
60. 2014 Pickford, M. & **Uhen, M. D.** *Namaia* Pickford et al., 2008, preoccupied by *Namaia* Green, 1963: proposal of a replacement name. *Communications of the Geological Survey of Namibia*, 15: 91.
59. 2014 **Uhen, M. D.** and Theodor, J. M. Community evolution and the origin of mammals commentary. p. 78 in *Foundations of Macroecology*. Smith, F. A., Brown, J. H., Gittleman, J. eds. The University of Chicago Press.
58. 2014 **Uhen, M. D.** New material of *Natchitochia jonesi* and a comparison of the innominate and locomotor capabilities of Protocetidae. *Marine Mammal Science*. 30(3): 1029-1066.
57. 2014 Saarinen, J. J., Boyer, A. G., Brown, J. H., Costa, D. P., Ernest, S. K. M., Evans, A. R., Fortelius, M., Gittleman, J. L., Hamilton, M. J., Harding, L. E., Lintulaakso, K., Lyons, S. K., Okie, J. G., Sibly, R. M., Smith, F. A., Stephens, P. R., and Theodor, J. M., **Uhen, M. D.** Patterns of maximum body size evolution in Cenozoic land mammals: intrinsic biological processes and extrinsic forcing. *Proceedings of the Royal Society B: Biological Sciences* 281(20132049): 1-10.
56. 2014 **Uhen, M. D.** New specimens of Protocetidae (Mammalia, Cetacea) from New Jersey and South Carolina. *Journal of Vertebrate Paleontology*. 34(1): 211-219.
55. 2013 Okie, J. G., Boyer, A. G., Brown, J. H., Costa, D. P., Ernest, S. K. M., Evans, A. R., Fortelius, M., Gittleman, J. L., Hamilton, M. J., Harding, L. E., Lintulaakso, K., Lyons, S. K., Saarinen, J. J., Smith, F. A., Stephens, P. R., Theodor, J. M., **Uhen, M. D.** and Sibly, R. M. 2013. Effects of allometry, productivity and lifestyle on rates and limits of body size evolution. *Proceedings of the Royal Society B: Biological Sciences* 280(1764): 1-7.

PEER REVIEWED PUBLICATIONS (continued)

54. 2013 **Uhen, M. D.** Case 3611 *Basilosaurus kochii* Reichenbach, 1847 (currently *Zygorhiza kochii*; Mammalia, Cetacea): proposed replacement of the holotype by a neotype. *Journal of Zoological Nomenclature*. 70(2): 103-107.
53. 2013 **Uhen, M. D.**, Barnosky, A. D., Bills, B., Blois, J., Carrano, M. T., Carrasco, M. A., Erickson, G. M., Eronen, J. T., Fortelius, M., Graham, R. W., Grimm, E. C., O'Leary, M. O., Mast, A., Piel, W. H., Polly, P. D., Sällä, L. K. From Card catalogs to computers: Databases in vertebrate paleontology. *Journal of Vertebrate Paleontology*. 33(1): 13-28.
52. 2013 **Uhen, M. D.** A review of North American Basilosauridae. *Bulletin of the Alabama Museum of Natural History*. 31(2): 1-45.
51. 2012 Evans, A. R., Jones, D., Boyer, A. G., Brown, J. H., Costa, D. P., Ernest, S. K. M., Fitzgerald, E. M. G., Fortelius, M., Gittleman, J. L., Hamilton, M. J., Harding, L. E., Lintulaakso, K., Lyons, S. K., Okie, J. G., Saarinen, J. J., Sibly, R. M., Smith, F. A., Stephens, P. R., Theodor, J. M., **Uhen, M. D.** The maximum rate of mammal evolution. *Proceedings of the National Academy of Sciences*. 109(11): 4187-4190.
50. 2011 **Uhen, M. D.**, Pyenson, N. P. DeVries, T. J., Urbina, M., Renne, P. R. New middle Eocene whales from the Pisco Basin of Peru. *Journal of Paleontology* 85(5): 955-969.
49. 2010 **Uhen, M. D.**, Coates, A. G., Jaramillo, C. A., Montes, C., Pimiento, C. Rincon, A., Strong, N., Velez-Juarbe, J. Marine mammals from the Miocene of Panama. *Journal of South American Earth Sciences* 30:167-175.
48. 2010 Smith, F. A., Boyer, A. G., Brown, J. H, Costa, D. P, Dayan, T., Ernest, S. K. M. Evans, A. R., Fortelius, M., Gittleman, J. L., Hamilton, M. J., Harding, L. E., Lintulaakso, K., Lyons, S. K., McCain, C., Okie, J. G., Saarinen, J. J., Sibly, R. M., Stephens, P. R., Theodor, J. and **Uhen, M. D.** The evolution of maximum body size of terrestrial mammals. *Science*: 330: 1216-1219.
47. 2010 Marx, F. G. and **Uhen, M. D.** Response to Comment on "Climate, Critters, and Cetaceans: Cenozoic Drivers of the Evolution of Modern Whales". *Science* 330: 178b.
46. 2010 **Uhen, M. D.** The origin(s) of whales. *Annual Review of Earth and Planetary Sciences*: 189-219.
45. 2010 Marx, F. G. and **Uhen, M. D.** Climate, critters, and cetaceans: Cenozoic drivers of the evolution of modern whales. *Science* 327: 993-996.

PEER REVIEWED PUBLICATIONS (continued)

44. 2009 **Uhen, M. D.** Basilosaurids. pp. 91 – 94 in *Encyclopedia of Marine Mammals*, 2nd edition, W. F. Perrin, J. G. M. Thewissen, and B. Würsig, ed. Plenum Press, New York.
43. 2009 **Uhen, M. D.** Evolution of Dental Morphology. pp. 302 – 307 in *Encyclopedia of Marine Mammals*, 2nd edition, W. F. Perrin, J. G. M. Thewissen, and B. Würsig, ed. Plenum Press, New York.
42. 2008 **Uhen, M. D.** A new *Xenorophus*-like odontocete cetacean from the Oligocene of North Carolina and a discussion of the basal odontocete radiation. *Systematic Palaeontology* 6: 423-452.
41. 2008 **Uhen, M. D.** Marine vertebrates of the Gulf Coast. Gulf Coast Association of Geological Societies Transactions 58:863-874.
40. 2008 Marino, L., Connor, R. C., Fordyce, R. E., Herman, L. M., Hof, P. R., Lefebvre, L., Lusseau D., McCowan, B., Nimchinsky, E. A., Pack, A. A., Rendell, L., Reidenberg, J. S., Reiss, D., **Uhen, M. D.** A claim in search of evidence: reply to Manger's thermogenesis hypothesis of cetacean brain structure. *Biological Reviews of the Cambridge Philosophical Society* 83: 417-440.
39. 2008 **Uhen, M. D.** New protocetid whales from Alabama and Mississippi and a new cetacean clade, Pelagiceti. *Journal of Vertebrate Paleontology* 28(3): 589-593.
38. 2008 **Uhen, M. D.** and Berndt, H.-J. First record of the archaeocete whale family Protocetidae from Europe. *The Fossil Record* 11:57-60.
37. 2008 Janis, C. J., Gunnell, G. F. and **Uhen, M. D.** Introduction. pp. 1-6 in Janis, C. J., Gunnell, G. F. and **Uhen, M. D.** eds. *Evolution of Tertiary Mammals of North America*, Volume 2. Cambridge University Press.
36. 2008 **Uhen, M. D.** Marine Mammals. pp. 507-522 in Janis, C. J., Gunnell, G. F. and **Uhen, M. D.** eds. *Evolution of Tertiary Mammals of North America*, Volume 2. Cambridge University Press.
35. 2008 **Uhen, M. D.** Archaeoceti. pp. 557-565 in Janis, C. J., Gunnell, G. F. and **Uhen, M. D.** eds. *Evolution of Tertiary Mammals of North America*, Volume 2. Cambridge University Press.
34. 2008 **Uhen, M. D.**, Fordyce, R. E., and Barnes, L. G. Odontoceti. pp. 566-606 in Janis, C. J., Gunnell, G. F. and Uhen, M. D. eds. *Evolution of Tertiary Mammals of North America*, Volume 2. Cambridge University Press.

PEER REVIEWED PUBLICATIONS (continued)

33. 2008 **Uhen, M. D.**, Fordyce, R. E., and Barnes, L. G. Mysticeti. pp. 607-628 in Janis, C. J., Gunnell, G. F. and **Uhen, M. D.** eds. *Evolution of Tertiary Mammals of North America*, Volume 2. Cambridge University Press.
32. 2008 Purdy, R. D. and **Uhen, M. D.** *Agabelus porcatus* (Cetacea, Odontoceti) is a stingray spine. *Journal of Vertebrate Paleontology* 28(1): 251-252.
31. 2007 Geisler, J. H., Theodore, J. M., Foss, S. E. and **Uhen, M. D.** Phylogenetic relationships of cetaceans to terrestrial artiodactyls. pp. 19-31 in Prothero, D. E. ed. *The Evolution of Artiodactyls*. Johns Hopkins University Press.
30. 2007 **Uhen, M. D.** Terrestrial to aquatic transition in Cetacea. pp. 392-409 in Anderson, J. S. and Sues, H.-D. *Evolutionary Transitions*. Indiana University Press.
29. 2007 **Uhen, M. D.** and Pyenson, N. Diversity estimates, biases, and historiographic effects: Resolving cetacean diversity in the Tertiary. *Palaeontologia Electronica* 10(2): 11A, 1-22.
28. 2007 **Uhen, M. D.** Evolution of marine mammals: Back to the sea after 300 million years. *The Anatomical Record*, 290: 514-522.
27. 2007 Marino, L., Connor, R. C., Fordyce, R. E., Herman, L. M., Hof, P. R., Lefebvre, L., Lusseau D., McCowan, B., Nimchinsky, E. A., Pack, A. A., Rendell, L., Reidenberg, J. S., Reiss, D., **Uhen, M. D.** Cetaceans have complex brains for complex cognition. *PLoS Biology*, 5(5): 966-972.
26. 2006 **Uhen, M. D.** The generic name *Mediocris* (Cetacea: Delphinoidea: Kentriodontidae), belongs to a foraminiferan. *Fossil Record*, 9(2): 259.
25. 2005 Geisler, J. H. and **Uhen, M. D.** Phylogenetic relationships of extinct cetartiodactyls: results of a simultaneous analysis of molecular, morphological, and stratigraphic data. *Journal of Mammalian Evolution*, 12(1/2): 145-160.
24. 2005 **Uhen, M. D.** A new genus and species of archaeocete whale from Mississippi. *Southeastern Geology*, 43(3): 157-172.
23. 2004 Marino, L. McShea, D. W., **Uhen, M. D.** The origin and evolution of large brains in toothed whales. *The Anatomical Record*, v. 281A: 1247-1255.
22. 2004 **Uhen, M. D.** Form, Function, and Anatomy of *Dorudon atrox* (Mammalia, Cetacea): An Archaeocete from the Middle to Late Eocene of Egypt. *University of Michigan Papers on Paleontology*, v. 34: 1-222.

PEER REVIEWED PUBLICATIONS (continued)

21. 2003 Geisler, J. H. and **Uhen, M. D.** Morphological support for a close relationship between hippos and whales. *Journal of Vertebrate Paleontology* 23(4): 991-996.
20. 2003 Marino, L., **Uhen, M. D.**, Pyenson, N. D., Frohlich, B. Reconstruction cetacean brain evolution using computed tomography. *The Anatomical Record (Part B: New Anatomist)*, v. 272B: 107-117.
19. 2002 **Uhen, M. D.** Basilosaurids. pp. 78 – 81 in *Encyclopedia of Marine Mammals*, William F. Perrin, Bernd Würsig, and J. G. M. Thewissen ed. Plenum Press, New York.
18. 2002 **Uhen, M. D.** Evolution of Dental Morphology. pp. 316 - 319 in *Encyclopedia of Marine Mammals*, William F. Perrin, Bernd Würsig, and J. G. M. Thewissen ed. Plenum Press, New York.
17. 2001 Sánchez-Villagra, M. R., Gasparini, Z., Lozán, R., Moody Jr., J. M., **Uhen, M. D.** New discoveries of vertebrates from a near-shore marine fauna from the Early Miocene of Northwestern Venezuela. *Paläontologische Zeitschrift*, v. 75, no. 2: 227-232.
16. 2001 **Uhen, M. D.** New material of *Eocetus wardii* (Mammalia, Cetacea), from the middle Eocene of North Carolina. *Southeastern Geology*, v. 40, no. 2: 135-148.
15. 2001 **Uhen, M. D.** and Gingerich, P. D. New genus of dorudontine archaeocete (Cetacea) from the middle-to-late Eocene of South Carolina. *Marine Mammal Science*, v. 17, no. 1:1-34.
14. 2000 Marino, L., **Uhen, M. D.**, Frohlich B., Bohaska, D., Aldag, J. M., and Whitmore, F. C. Endocranial volume of mid-Late Eocene archaeocetes (Order: Cetacea) revealed by computed tomography: Implications for cetacean brain evolution. *Journal of Mammalian Evolution*, v. 7, no.2: 81-94.
13. 2000 **Uhen, M. D.** Replacement of deciduous first premolars in archaeocete whales. *Journal of Mammalogy*, v. 81, no. 1: 123-133.
12. 1999 O'Leary, M. A. and **Uhen, M. D.** The time of origin of whales and the role of behavioral changes in the terrestrial-aquatic transition. *Paleobiology*, v. 25, no. 4: 534-556.
11. 1999 **Uhen, M. D.** New species of protocetid archaeocete whale, *Eocetus wardii* (Mammalia: Cetacea) from the Middle Eocene of North Carolina. *Journal of Paleontology*, v. 73, no. 3: 512-528.

PEER REVIEWED PUBLICATIONS (continued)

10. 1998 **Uhen, M. D.** Middle to Late Eocene Basilosaurines and Dorudontines. pp. 29-61 in, *The Emergence of Whales*, J. G. M. Thewissen, editor. Plenum Press, New York.
9. 1998 **Uhen, M. D.** New protocetid (Mammalia, Cetacea) from the late middle Eocene Cook Mountain Formation of Louisiana. *Journal of Vertebrate Paleontology*, vol. 18, no. 3: 664-668.
8. 1998 Gingerich, P. D. and **Uhen, M. D.** Likelihood estimation of the time of origin of Cetacea and the time of divergence of Cetacea and Artiodactyla. *Palaeontologica Electronica*, vol. 1, no. 2
7. 1997 Bloch, J. I., Fisher, D. C., Gingerich, P. D., Gunnell, G. F., Simons, E. L. and **Uhen, M. D.** Cladistic analysis and anthropoid origins. *Science*, 278: 2134-2135.
6. 1996 Gingerich, P. D. and **Uhen, M. D.** *Ancalocetus simonsi*, a new dorudontine archaeocete (Mammalia, Cetacea) from the early late Eocene of Wadi Hitan, Egypt. *Contributions from the University of Michigan Museum of Paleontology*, vol. 29, no. 13: 359-401.
5. 1996 **Uhen, M. D.** An evaluation of clade-shape statistics using simulations and extinct families of mammals. *Paleobiology*, vol. 22, no. 1: 8-22.
4. 1995 **Uhen, M. D.** and Gingerich, P. D. Evolution of *Coryphodon* (Mammalia, Pantodonta) in the late Paleocene and early Eocene of northwestern Wyoming. *Contributions from the University of Michigan Museum of Paleontology*, vol. 29, no. 10: 259-289.
3. 1994 Gingerich, P. D., Domning, D. P., Blane, C. E., **Uhen, M. D.** Cranial morphology of *Protosiren fraasi* (Mammalia, Sirenia) from the middle Eocene of Egypt: a new study using computed tomography. *Contributions from the University of Michigan Museum of Paleontology*, vol. 29, no. 2: 41-67.
2. 1994 Gingerich, P. D. and **Uhen, M. D.** Time of origin of Primates. *Journal of Human Evolution*, vol. 27, no. 5: 443-445.
1. 1993 Dent, S. R. and **Uhen, M. D.** Tidal reorientation and transport of recent bivalves on a temperate tidal flat, northwestern U. S. *Palaios*, 8: 244-249.

ADDITIONAL PUBLICATIONS

17. 2018 Uhen, M. D. The Rise of Marine Mammals: 50 Million Years of Evolution. *Quarterly Review of Biology*. 93(4): 377-378.
16. 2016 **Uhen, M. D.** *The Walking Whales: From Land to Water in Eight Million Years*, book review. *Journal of Vertebrate Paleontology*, e1040119.
15. 2014 **Uhen, M. D.** Evolutionary Dynamics. in *Foundations of Macroecology*. Smith, F. A., Brown, J. H., Gittleman, J. eds. The University of Chicago Press.
14. 2013 **Uhen, M. D.** A brief history of marine mammals. *Journal of Mammalian Evolution*. 20(3): 271.
13. 2011 **Uhen, M. D.** Online Systematic Archive, Virginia Fossil Vertebrates, *The Paleobiology Database*. http://www.paleobiodb.org/cgi-bin/bridge.pl?user=Guest&action=displayPage&page=OSA_19_Virginia
12. 2009 **Uhen, M. D.** Online Systematic Archive, Alabama Fossil Vertebrates, *The Paleobiology Database*. http://www.paleobiodb.org/cgi-bin/bridge.pl?user=Guest&action=displayPage&page=OSA_18_Alabama
11. 2008 **Uhen, M. D.** Bibliography of archaeocete Cetaceans, <http://paleobiology.si.edu/features/paleoFeatures.html>
10. 2007 **Uhen, M. D.** Online Systematic Archive, Sirenia, *The Paleobiology Database*. http://www.paleobiodb.org/cgi-bin/bridge.pl?user=Guest&action=displayPage&page=OSA_14_Sirenia
9. 2007 **Uhen, M. D.** Online Systematic Archive, Desmostylia, *The Paleobiology Database*. http://www.paleobiodb.org/cgi-bin/bridge.pl?user=Guest&action=displayPage&page=OSA_15_Desmostylia
8. 2007 **Uhen, M. D.** Online Systematic Archive, Pinnipedimorpha, *The Paleobiology Database*. http://www.paleobiodb.org/cgi-bin/bridge.pl?user=Guest&action=displayPage&page=OSA_16_Pinnipedimorpha
7. 2007 **Uhen, M. D.** Online Systematic Archive, Sphenisciformes, *The Paleobiology Database*. http://www.paleobiodb.org/cgi-bin/bridge.pl?user=Guest&action=displayPage&page=OSA_17_Sphenisciformes
6. 2005 **Uhen, M. D.** Online Systematic Archive, Cetacea, *The Paleobiology Database*. http://www.paleobiodb.org/cgi-bin/bridge.pl?user=Guest&action=displayPage&page=OSA_9_Cetacea

ADDITIONAL PUBLICATIONS (continued)

5. 2006 **Uhen, M. D.** *Marine Mammals: Evolutionary Biology*, Second Edition, book review. *The Quarterly Review of Biology*, 81: 297.
4. 2000 **Uhen, M. D.** The paleontological legacy of Eckert and Mauchly, book review of *Numerical Paleobiology*. *Paleobiology*, v.26, no. 2: 310-315.
3. 1997 **Uhen, M. D.** *Dorudon atrox*: A first for the Exhibit Museum of Natural History. *LSA Magazine*, 20(2): 9.
2. 1997 Gingerich, P. D. and **Uhen, M. D.** The origin and evolution of whales. *LSA Magazine*, 20(2): 4-10.
1. 1996 **Uhen, M. D.** *Dorudon atrox (Mammalia, Cetacea): Form, Function, and Phylogenetic Relationships of an Archaeocete from the Late Middle Eocene of Egypt*. Ph.D. dissertation, University of Michigan, Ann Arbor, Michigan.

PUBLISHED ABSTRACTS

89. 2019 Williams, J., Goring, S., Grimm, E., Smith, A., and **Uhen, M. D.**, 2019, Building big data and open science from the long tail: Community-curated data resources, Neotoma Paleoeology data-base, and the Earth-Life Consortium: *PaleoBios*: 36(0) 369.
88. 2019 Jukar, A., Lyons, S., Wagner, P., and **Uhen, M. D.** Late Quaternary extinctions in India. *PaleoBios*: 36(0) 192.
87. 2019 **Uhen, M. D.** Fossil cetaceans of the eastern Pacific: A comparison of the Northern and Southern Hemispheres. *PaleoBios* 36(0): 353.
86. 2018 **Uhen, M. D.** 2018. The ecosystem of fossil vertebrate databases: Mutualism or competition? *Society of Vertebrate Paleontology Abstracts of Papers* 2018:231.
85. 2018 Hudgins, M. N., **Uhen, M. D.** and Hinnov, L. N. The evolution of respiratory systems in Theropoda and Paracrocodylomorpha and the end-Triassic extinction. *Society of Vertebrate Paleontology Abstracts of Papers* 2018:1523.
84. 2018 Nelson, M. D., and **Uhen, M. D.** A new platanistoid (Cetacea, Odontoceti) and its place in the evolution of the Squalodelphinidae and the Platanistidae. *Society of Vertebrate Paleontology Abstracts of Papers* 2018:190.
83. 2018 Villegas-Garin, F. A., and **Uhen, M. D.** Mesozoic paravian and pterosaurian palaeoenvironmental distribution of the (Paleo) Northern Hemisphere. *Society of Vertebrate Paleontology Abstracts of Papers* 2018:234.

PUBLISHED ABSTRACTS (continued)

82. 2018 Sessa, J., S. Butts, T. Karim, G. Nelson, C. Norris, D. Serratos, and **Uhen, M. D.** The ePANDDA project: linking the Paleobiology Database, iDigBio, and iDigPaleo for biological and paleontological research, collections management, and outreach. *Biodiversity Information Science and Standards*, 2.
81. 2018 Park Boush, L. E., Williams, J. W., Bowen, G., Goring, S., Lehnert, K., Noren, A. J., Peters, S. E., Sessa, J. A., Stigall, A. L., **Uhen, M. D.** Big data in Paleontology—Creating a roadmap for building a data synthesis center for the paleogeosciences. *Geological Society of America Abstracts with Programs*, v. 50, no. 6.
80. 2018 Bentley, C., **Uhen, M. D.**, Berquist, P. J., Lockwood, R. Lukes, L. A., Ryker, K., and George, C. O. Using fossils of the Paleobiology Database (PBDB) to explore the tectonic linkage of the Americas. *Geological Society of America Abstracts with Programs*, v. 50, no. 5, p. 64-4.
79. 2017 **Uhen, M. D.** Coordinated diversity changes in Cenozoic marine vertebrates reflect climate fluctuations: *Geological Society of America Abstracts with Programs*, v. 49, no. 6, p. 220-210.
78. 2017 Bentley, C., Sundell, A., Ryker, K., Lukes, L. A., **Uhen, M. D.**, George, C. O., Lockwood, R. and Berquist, P. J. Using the paleobiology database to explore tectonic events. *Geological Society of America Abstracts with Programs* 49(6):204-10.
77. 2017 **Uhen, M. D.** Integrating paleontological and neontological data across time and space, *Digital Data in Paleontological Research*: Berkeley, CA.
76. 2017 **Uhen, M. D.** Paleobiology Database: A community based data service for research, education, and museums, *Inaugural Digital Data in Biodiversity Research Conference*: Ann Arbor.
75. 2017 Clementz, M., and **Uhen, M. D.** Morphologic and isotopic evidence of the developmental history of auditory bullae in *Dorudon atrox* and *Zygorhiza kochii* (Order Cetacea, Family Basilosauridae). *Society of Vertebrate Paleontology Abstracts of Papers* 2017:99.
74. 2017 Goring, S., Jenkins, J., **Uhen, M. D.**, Peters, S., Williams, J. W. and McClennen, M. 2017: Earthlife Consortium - Open API Development to Support Long Time-Scale Biogeoscience. *Earth Cube All-Hands Meeting*, Seattle,
73. 2017 Bentley, C., Ryker, K., Lukes, L. A., **Uhen, M. D.**, George, C. O., Lockwood, R. and Berquist, P. J. Student perceptions of using the Paleobiology Database (PBDB) to conduct undergraduate research. *Geological Society of America Abstracts with Programs* 49(6):264-3.

PUBLISHED ABSTRACTS (continued)

72. 2017 Peredo, C. M., **Uhen, M. D.** and Nelson, M. D. A new kentriodontid (Odontoceti) from the Pacific Northwest sheds new light on the temporal and geographic range of the enigmagtic dolphin family. *Society of Vertebrate Paleontology Abstracts of Papers* 2017:176.
71. 2017 Shipps, B. K., Peredo, C. M., and **Uhen, M. D.** Analysis of fossil environments reveals biases in the fossil record of mysticete preservation. *Society of Vertebrate Paleontology Abstracts of Papers* 2017:194.
70. 2017 **Uhen, M. D.** 2017: Latitudinal effects on the distribution and diversity of fossil Cetacea. *Secondary Adaptation of Tetrapods to Life in Water*, Berlin.
69. 2017 **Uhen, M. D.** Paleobiology Database: A community based data service for research, education, and museums;in *Inaugural Digital Data in Biodiversity Research Conference*, Ann Arbor.
68. 2017 **Uhen, M. D.** Integrating paleontological and neontological data across time and space;in *Digital Data in Paleontological Research*, Berkeley, CA.
67. 2017 Uhen, M. D. Latitudinal effects on the distribution and diversity of fossil marine mammals. *Society of Vertebrate Paleontology Abstracts of Papers* 2017:206.
66. 2017 **Uhen, M. D.** Coordinated diversity changes in Cenozoic marine vertebrates reflect climate fluctuations. *Geological Society of America Abstracts with Programs* 49(6):220-10.
65. 2016 Peredo, C. M., Pyenson, N., **Uhen, M. D.** Morphological consequences of tooth loss: A comparison of the course of the mandibular canal in mysticete cetaceans using 3D models. *Society of Vertebrate Paleontology Abstracts of Papers*.
64. 2016 **Uhen, M. D.** Integrating paleontological and Neontological data across time and space. *GSA Geological Society of America Abstracts with Programs* 48(7).
63. 2015 Churchill, M., and **Uhen, M. D.** The use of seal limb bones (Phocidae: Carnivora) in taxonomy and systematics: New insights from morphometric analysis. *Society of Vertebrate Paleontology Abstracts of Papers*.
62. 2015 Peredo, C. M., and **Uhen, M. D.** Identifying and evaluating the role of paleogeography of marine mammal dispersal across ocean regions using beta diversity metrics. *Society of Vertebrate Paleontology Abstracts of Papers*.
61. 2015 **Uhen, M. D.** Paleobiology Database: Using data from the past to expand research and educational opportunities for the future. *Geological Society of America Abstracts with Programs* 47(7).

PUBLISHED ABSTRACTS (continued)

60. 2015 Smith, D. M., Butts, S. H., Gall, L., Karim, T. S., Landman, N. H., Norris, C. A., Sessa, J. A., **Uhen, M. D.** The EPANDDA project: Increasing accessibility to digitized data from the paleontological and neontological communities. *Geological Society of America Abstracts with Programs* 47(7).
59. 2015 Williams, J. W., **Uhen, M. D.**, Goring, S., Ashworth, A. C., Bills, B., Blois, J., Charles, D., Graham, R. W., Smith, A.J. & Girimm, E. Community-supported data repositories in paleoecology and paleoclimatology: The 'middle tail' between geoscientific users and geoinformatics. *Geological Society of America Abstracts with Programs* 47(7).
58. 2015 Peredo, C. M. and **Uhen, M. D.** Identifying and evaluating the role of paleogeography of marine mammal dispersal across ocean regions using beta diversity metrics. *Ecological Society of America Abstracts*, COS 14-2.
57. 2014 **Uhen, M. D.**, and Godfrey, S. J. A new specimen of *Agorophius pygmaeus* (Cetacea, Odontoceti, Agorophiidae) from the early Oligocene Ashley Formation of South Carolina, U.S.A. *Society of Vertebrate Paleontology Program and Abstracts*.
56. 2014 **Uhen, M. D.** Paleobiology Database: A community based data service for paleobiology. *Geological Society of America Abstracts with Programs*, 46:288-282.
55. 2014 Hsu, L., Bristol, S., Lehnert, K. A., Arko, R. A., Peters, S. E., **Uhen, M. D.**, Song, L. Exposing USGS sample collections for broader discovery and access: collaboration between ScienceBase, IEDA:SESAR, and Paleobiology Database. *American Geophysical Union Fall Meeting*, abstract #IN23A-3724.
54. 2014 Smith, K. M., Hastings, A. K., Bebej R. M., and **Uhen, M D.** Temporal and paleoenvironmental distribution of *Basilosaurus* (Mammalia: Cetacea) in the southeastern United States: New evidence from the Eocene of southwest Georgia. *The Paleontological Society Special Publication*, 13:165-166.
53. 2014 **Uhen, M. D.** Marine mammal body masses over the Cenozoic. Secondary Adaptations of Tetrapods to Life in the Water Seventh Triennial Meeting, George Mason University, Fairfax, VA.
<http://events2.gmu.edu/secad2014/category/abstracts/>
52. 2014 Peredo, C. M. and **Uhen, M. D.** A statistical analysis of similarity in generic diversity across major ocean regions. Secondary Adaptations of Tetrapods to Life in the Water Seventh Triennial Meeting, George Mason University, Fairfax, VA.
<http://events2.gmu.edu/secad2014/category/abstracts/>

PUBLISHED ABSTRACTS (continued)

51. 2014 Villari, J., **Uhen, M. D.**, Gunnell, G. F., Rimoli, R., and Rosenberger, A. L. A remarkable incidence of *Stenella* remains in the Padre Nuestro, a Freshwater Cave System on the island of Hispaniola. Secondary Adaptations of Tetrapods to Life in the Water Seventh Triennial Meeting, George Mason University, Fairfax, VA. <http://events2.gmu.edu/secad2014/category/abstracts/>
50. 2013 Williams, J. W., Lehnert, K. A., Anderson, D. M., Fils, D., Jenkins, C., Lenhardt, W. C., Noren, A., Olszewski, T. D. and **Uhen, M. D.** Cyberinfrastructure for Paleobiosciences (C4P): Building a community of geoscientists and cyberscientists for the Earth-Life system. *Geological Society of America Abstracts with Programs* 45(7): 201.
49. 2012 Clementz, M., **Uhen, M. D.** and Ontogenetic variation in dental stable isotope values of two species of basilosaurids (*Zygorhiza kochii* and *Dorudon atrox*). *Society of Vertebrate Paleontology Program and Abstracts*, 72: 80.
48. 2012 **Uhen, M. D.** New specimens of Middle Eocene whales (Cetacea, Protocetidae) from New Jersey. *Society of Vertebrate Paleontology Program and Abstracts*, 72: 186.
47. 2012 **Uhen, M. D.** Evolution of marine endotherms. Society for Experimental Biology, Salzburg, Austria: 109.
46. 2011 **Uhen, M. D.** A new protocetid whale from the Middle Eocene of Mississippi. *Society of Vertebrate Paleontology Program and Abstracts*, 2011: 207.
45. 2011 Field, D. J., Racicot, R. A., and **Uhen, M. D.** A new marine tetrapod assemblage from the Eocene of Western Sahara. *Journal of Vertebrate Paleontology*, Abstract Supplement: 108–109.
44. 2011 Field, D. J., Racicot, R. A., and **Uhen, M. D.** A new marine tetrapod assemblage from the Eocene of Western Sahara. *Sixth Triennial Conference on Secondary Adaptation of Tetrapods to Life in Water*: 28.
43. 2010 Gilbert, K., Ivany, L. C., **Uhen, M. D.** Killer sperm whales: Exploring the life history and ecology of Neogene physterids from the Atlantic Coastal Plain. *Geological Society of America Abstracts with Programs* 42(5): 321.
42. 2010 Alroy, J., Carrano, M., and **Uhen, M. D.** Has global tetrapod biodiversity increased since the Cretaceous? *Society of Vertebrate Paleontology Program and Abstracts*, 2010: 52A.

PUBLISHED ABSTRACTS (continued)

PUBLISHED ABSTRACTS (continued)

41. 2010 Gilbert, K., Ivany, L. C., Teece, M., **Uhen, M. D.** Neogene sperm whales on the Atlantic Coastal Plain: Constraining life history and ecology from teeth. *Geological Society of America Abstracts with Programs* 42(1): 82.
40. 2010 **Uhen, M. D.**, and Clementz, M. Life history and ecological information inferred from stable isotope analysis of the dentition of *Zygorhiza kochii* (Cetacea: Basilosauridae). *Society of Vertebrate Paleontology Program and Abstracts*, 2010: 179A-180A.
39. 2009 Smith, F. A., Boyer, A., Brown, J. H., Costa, D. P., Dayan, T., Evans, A., Ernest, S. K. M., Harding, L., Lintulaakso, K., Lyons, S. K., Sibly, R. M., Saarinen, J., Theodor, J. and **Uhen, M. D.** 2009. Size matters: examining patterns of maximum body size of mammals over time and space. *International Biogeography Society 4th Biannual Meeting, Merida, Mexico.*
38. 2009 Smith, F. A., Boyer, A., Brown, J. H., Costa, D. P., Dayan, T., Evans, A., Ernest, S.K. M., Fortelius, M., Harding, L., Lintulaakso, K., Lyons, S. K., Sibly, R. M., Saarinen, J., Theodor, J. and **Uhen, M. D.** Size matters: examining patterns of maximum body size of mammals over time and space. *Ecological Society of America, Albuquerque, New Mexico.*
37. 2009 Lyons, S. K., Boyer, A., Brown, J. H., Costa, D. P., Dayan, T., Evans, A., Ernest, S. K. M., Fortelius, M., Harding, L., Lintulaakso, K., Lyons, S. K., Saarinen, J., Sibly, R. M., Smith, F. A., Theodor, J. and **Uhen, M. D.** Community body size distributions of mammals differ among trophic groups, but not across time. *North American Paleontological Convention, Cincinnati, Ohio.*
36. 2009 Marx, F.G. and **Uhen, M.D.** Climate, critters and cetaceans -- Cenozoic drivers of the evolution of modern whales. *Geological Society of New Zealand Miscellaneous Publication* 128A 132.
35. 2008 **Uhen, M. D.**, Pyenson, N., DeVries, T., Urbina, Schmitt, M. The oldest cetaceans from the Southern Hemisphere: New archaeocetes from the Pisco Basin of southern Peru. *Journal of Vertebrate Paleontology*, 28(3): 154A.
34. 2008 **Uhen, M. D.** Evolution of Tertiary Gulf Coast marine vertebrate faunas. *Geological Society of America Abstracts with Programs* 2008:811-1.
33. 2007 **Uhen, M. D.** The earliest toothless mysticete: A chaeomysticetan from the early Oligocene Alsea Formation, Toledo, Oregon. *Journal of Vertebrate Paleontology*, 27(3): 161A.

PUBLISHED ABSTRACTS (continued)

32. 2006 **Uhen, M. D.** Biogeographic and temporal origin of Neoceti. *Journal of Vertebrate Paleontology*, 26(3): 135A.
31. 2006 **Uhen, M. D.** Biogeographic distribution of archaeocetes in North America. *Geological Society of America Abstracts with Programs*, 28(4): 63.
30. 2005 **Uhen, M. D.** A new xenorophoid cetacean from the Oligocene of North Carolina and the origin of Odontoceti. *16th Biennial Conference on the Biology of Marine Mammals, The Society for Marine Mammalogy, Abstracts*: 287.
29. 2005 **Uhen, M. D.** A new *Xenorophus*-like odontocete cetacean from the Oligocene of North Carolina. *Journal of Vertebrate Paleontology*, 25(3): 125A.
28. 2005 Bodenbender, B. E., Demko, T. M., and **Uhen, M. D.** An REU Enables Intensive and Extensive Multidisciplinary Field Research: The Example of an Upper Jurassic Dinosaur Site in the Bighorn Basin, Wyoming. *Geological Society of America Abstracts with Programs*, 37(7): 491.
27. 2005 Marino, L., **Uhen, M. D.**, and McShea, D. W. Encephalization in odontocetes: What's being aquatic got to do with it?, *Evolution of Aquatic Tetrapods Abstracts, Cranbrook Institute of Science Miscellaneous Publications*, 1: 82-83.
26. 2005 **Uhen, M. D.**, and Marino, L., The evolution of high encephalization in odontocetes in relation to the origin of echolocation, *Evolution of Aquatic Tetrapods Abstracts, Cranbrook Institute of Science Miscellaneous Publications*, 1: 82.
25. 2004 Geisler, J. and **Uhen, M. D.** Phylogeny of Cetartiodactyla as indicated by simultaneous analyses of molecular, morphological, and stratigraphic data. *Journal of Vertebrate Paleontology*, 24(3): 63A.
24. 2003 Marino, L., **Uhen, M. D.**, McShea, D. W. A new analysis of trends in cetacean brain evolution. *15th Biennial Conference on the Biology of Marine Mammals, The Society for Marine Mammalogy, Abstracts*: 102.
23. 2003 Alroy, J., Behrensmeyer, K. Carrano, M., Clyde, W. C., Fara, E., Fortelius, M., Head, J., Hunter, J., **Uhen, M. D.** and Wang, X. The 5% project: Just how good is the fossil record of tetrapods. *Journal of Vertebrate Paleontology*, 23(3): 29A.
22. 2003 **Uhen, M. D.** Biogeographic distribution of dorudontine archaeocetes in North America. *Journal of Vertebrate Paleontology*, 23(3): 105A-106A.
21. 2002 **Uhen, M. D.** and Pyenson, N. Evolution of Cetacean Diversity. *Journal of Vertebrate Paleontology*, 22(3): 116A.

PUBLISHED ABSTRACTS (continued)

20. 2002 Pyenson, N. D., and **Uhen, M. D.** Understanding cetacean diversity through the Tertiary: biases, estimates, and historiographic effects. Geological Society of New Zealand Miscellaneous Publication, Secondary adaptation to life in water: 38–39.
19. 2002 Marino, L., **Uhen, M. D.**, Pyenson, N., Rotenberg, S., Shamas, B., and Frolich, B. Brain morphometry during cetacean (dolphin, porpoise, and whale) evolution revealed by computed tomography. *Society for Neuroscience Abstracts*, 877.
18. 2002 **Uhen, M. D.**, Marino, L., and Pyenson, N. Evolution of cetacean brains over time, through morphospace, and among lineages. Geological Society of New Zealand Miscellaneous Publication, Secondary adaptation to life in water: 50–51.
17. 2001 **Uhen, M. D.** and Marino, L. Computed tomography of endocranial morphology in fossil and recent Cetacea. *14th Biennial Conference on the Biology of Marine Mammals, The Society for Marine Mammalogy, Abstracts*: 220.
16. 2001 **Uhen, M. D.** and Marino, L. Computed tomography of endocranial morphology in fossil Cetacea. *Journal of Vertebrate Paleontology*, 21(3): 109A.
15. 2000 **Uhen, M. D.** and Tichy, G. A new basilosaurid archaeocete from Austria. *Journal of Vertebrate Paleontology*, 20(3): 74A-75A.
14. 1999 **Uhen, M. D.** Replacement of deciduous first premolars and dental eruption in archaeocete whales. *Journal of Vertebrate Paleontology*, 19(3): 81A.
13. 1999 **Uhen, M. D.** and Gingerich, P. D. New genus of dorudontine archaeocete (Cetacea) from the Middle-to-Late Eocene of South Carolina. *13th Biennial Conference on the Biology of Marine Mammals, The Society for Marine Mammalogy, Abstracts*: 190.
12. 1998 **Uhen, M. D.** North American Protocetidae (Cetacea, Archaeoceti). *Journal of Vertebrate Paleontology*, 18(3): 83A.
11. 1998 O’Leary, M. A. and **Uhen, M. D.** The most primitive cetacean and the role of feeding in the terrestrial aquatic transition. *Journal of Vertebrate Paleontology*, 18(3): 68A.
10. 1997 **Uhen, M. D.** What is *Pontogeneus brachyspondylus*? *Journal of Vertebrate Paleontology*, 17(3): 82A.
9. 1996 **Uhen, M. D.** New protocetid archaeocete (Mammalia, Cetacea) from the late middle Eocene Cook Mountain Formation of Louisiana. *Journal of Vertebrate Paleontology*, 16(3): 70A.

PUBLISHED ABSTRACTS (continued)

8. 1996 Angielczyk, K. D. and **Uhen, M. D.** The preparation, molding, casting, and mounting of *Dorudon atrox* (Mammalia, Archaeoceti). *Journal of Vertebrate Paleontology*, 16(3): 20A.
7. 1996 **Uhen, M. D.** Composition and characteristics of the subfamily Dorudontinae (Archaeoceti, Cetacea). *North American Paleontological Convention Abstracts*: 403.
6. 1996 Gingerich, P. D. and **Uhen, M. D.** Likelihood estimation of the time of origin of whales (Cetacea). *North American Paleontological Convention Abstracts*: 146.
5. 1995 **Uhen, M. D.** An evaluation of clade shape statistics using simulations and extinct families of mammals. *Journal of Vertebrate Paleontology*, 15(3): 57A.
4. 1994 **Uhen, M. D.** Forelimb of late middle Eocene *Prozeuglodon atrox* (Mammalia, Cetacea) from Fayum Egypt. *Journal of Vertebrate Paleontology*, 14(3): 50A.
3. 1993 **Uhen, M. D.** A study of incremental growth lines in teeth of Paleocene-Eocene *Coryphodon*. *Journal of Vertebrate Paleontology*, 13(3): 61A.
2. 1992 **Uhen, M. D.** Size trends of *Coryphodon* in relation to Paleocene-Eocene climate. *Journal of Vertebrate Paleontology*, 12(3): 56A.
1. 1991 **Uhen, M. D.** Vertebral proportions as indicators of locomotor style in mammals. *Journal of Vertebrate Paleontology*, 11(3): 59A.

PAPERS IN SUBMISSION/IN PREPARATION

2. In prep **Uhen, M. D.**, Boyer, A. G., Costa, D. P., Ernest, S. K. M., Evans, A. R., Fortelius, M., Gittleman, J. L., Hamilton, M. J., Harding, L. E., Lintulaakso, K., Lyons, S. K., Okie, J. G., Saarinen, J. J., Sibly, R. M, Smith, F. A., Stephens, P. R., and Theodor, J. M. The trajectory of marine mammal body mass over the Cenozoic.
1. In prep **Uhen, M. D.**, Clementz, M. Life history of late Eocene *Zygorhiza kochii* from stable isotopic analysis of dentition.