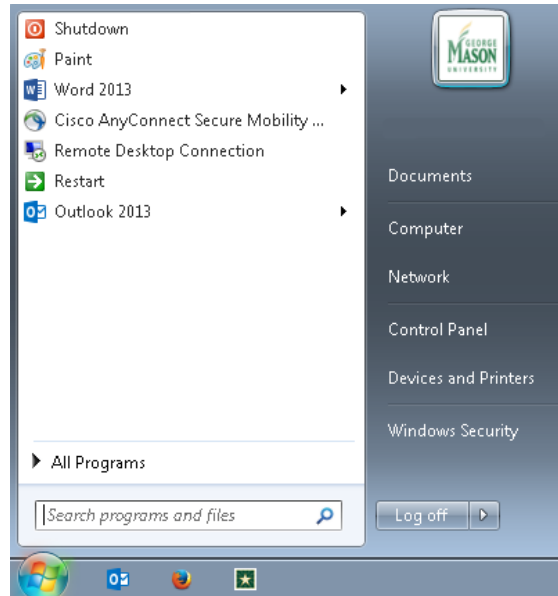


Overview

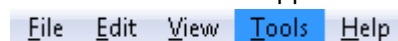
George Mason University VPN allows you to connect to Mason networks as if you were on campus, making access to restricted services possible. To connect to the MESA drive from your Windows computer, you need to use the Cisco AnyConnect client.

Mapping Mesa Drives on Windows 7

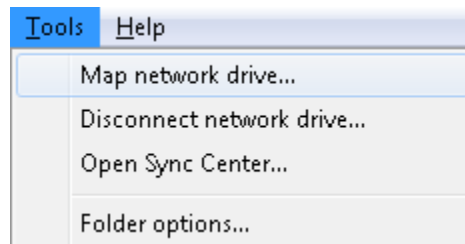
1. Open **Computer** by clicking the **Start Button > Computer**.



2. Tap the **Alt** key on the keyboard.
3. Click on the Tools Menu that appears.



4. Click on **Map network drive**.



5. Choose drive letter **M:**.



- For the folder, put `\\mesa2.mesa.gmu.edu\NetID` (Where **NetID** is your Patriot Pass NetID).

Folder:

- Make sure both **Reconnect at sign-in** and **Connect using different credentials** are checked.

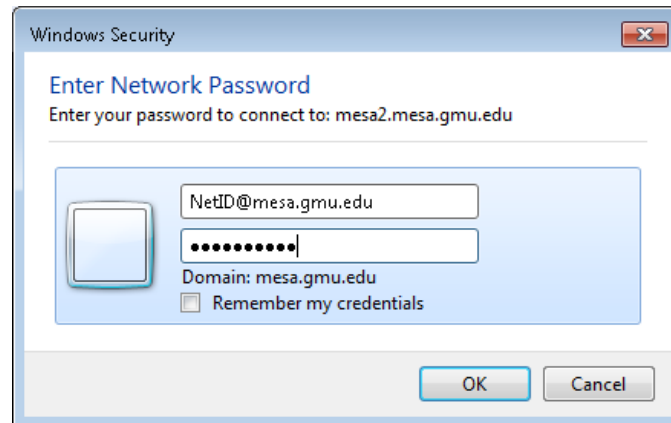
- ☒ Reconnect at sign-in
- ☒ Connect using different credentials

- Click **Finish**.

- Enter the following information and then click **OK**:

Username: NetID@mesa.gmu.edu (Where **NetID** is your Patriot Pass NetID)

Password: Your Patriot Pass password



- You are now connected to the MESA drive.

Mapping Mesa Drives on Windows 8/10

- Connect to the **Cisco VPN**.
- Launch the File Explorer:
 - Windows 8:** Navigate to the Desktop. Click on the **File Explorer** button.
 - Windows 10:** Click the **Start** button. Click on **File Explorer > This PC**.
- Click on the **Computer** tab.



- Click on **Map network drive**.



- Choose drive letter **M:**.

Drive:

- For the folder, put **\\mesa2.mesa.gmu.edu\NetID** (Where **NetID** is your Patriot Pass NetID).

Folder:

- Make sure both **Reconnect at sign-in** and **Connect using different credentials** are checked.

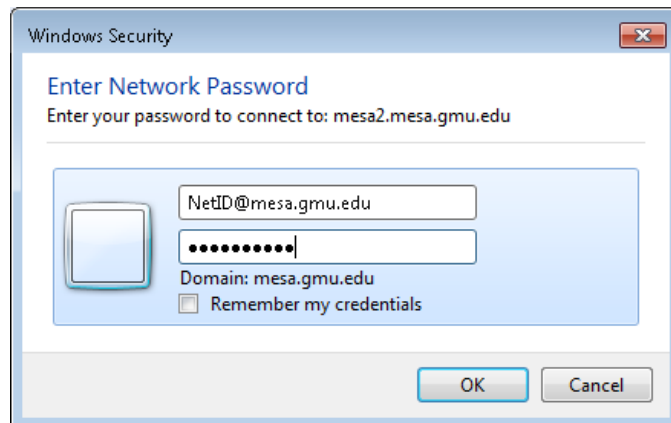
- ☒ Reconnect at sign-in
☒ Connect using different credentials

- Click **Finish**.

- Enter the following information and then click **OK**:

Username: NetID@mesa.gmu.edu (Where **NetID** is your Patriot Pass NetID)

Password: Your Patriot Pass password

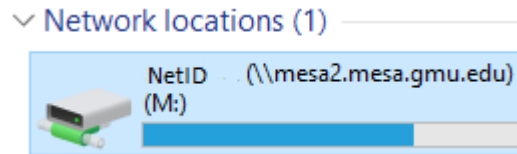


- You are now connected to the MESA drive.

Disconnect from the MESA Drive

1. Open **Computer** on Windows 7 or **File Explorer** on Windows 8/10.

2. **Right click** on your **M:** drive.



3. Click on **Disconnect**.

Open

Open in new window

Pin to Quick access

Scan for Viruses...

Restore previous versions

Always available offline

Pin to Start

Disconnect

Copy

Create shortcut

Rename

Properties